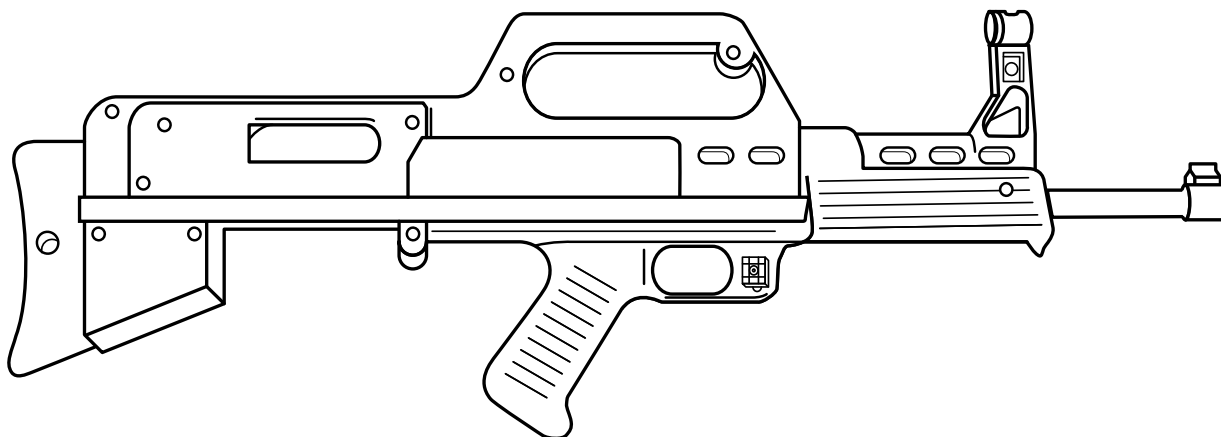


MUZZELITE

by Mounting Solutions Plus

MZ-1022 Instruction

**Bulpup Conversion Kit
for the Ruger 10/22**



Before You Start

1. Check the weapon to be sure that it is unloaded.
2. Check with local regulations and restrictions for overall rifle length and bullpup style.

Stock installation:

1. Follow the enclosed installation directions carefully.

After Installation:

1. Always keep the gun unloaded until ready to shoot.
2. NEVER chamber a live round until you are ready to shoot. Be sure of your target.
3. NEVER load a firearm in an area where it cannot be safely discharged.
4. Always keep your finger off the trigger until ready to shoot.
5. NEVER point a loaded weapon at anything but the intended target.
6. Be careful! NEVER accidentally point weapon at an incendiary device.
7. Before anyone uses this weapon, make sure they know how it operates.
8. Treat this and all other firearms as if they are always loaded.

Muzzelite Stocks also available for:

Ruger Mini 14 (MZ14)	Marlin 60 (MZ60)
Marlin Camp 9 (MZ9)	Marlin 70 (MZ70)

WARNING!

To comply with Federal Law, not only must your rifle have a 16 inch or longer barrel, but the overall length of the Weapon must be 26 inches or greater. Placing a rifle with a relatively short barrel in a Muzzelite Stock may result in violation of the 26 inch length restriction, even though the barrel length remains in the compliance. Muzzelite stocks are 23 inches long, and so require a minimum of 3 inches of barrel extension beyond the stock.

It is your obligation to measure the overall length of your weapon, out of the stock, to ensure it will remain in compliance with the 16 inch length restriction when placed in a Muzzelite Stock. If your weapon has a barrel that complies, but the overall weapon length will not meet the 26 inch restriction if placed in a Muzzelite Stock, do NOT, repeat so NOT, assemble your weapon in the Muzzelite Stock.

Remember that these restrictions are only those imposed by Federal Law. Some states or localities may impose additional restrictions. It is your obligation to research ALL laws applicable to your locale, and to remain in compliance with ALL applicable laws, not just Federal restrictions.

This notice does not apply to any NFA weapon to which length restrictions are inapplicable, which has been lawfully approved for possession by the BATF and local governments.

Again, it is your obligation to ensure that your weapon remains in compliance with ALL applicable length restrictions.

Muzzelite corporation



Mounting Solutions Plus

P.O. Box 971202

Miami, FL 33157

1-800-428-9394

www.mountsplus.com



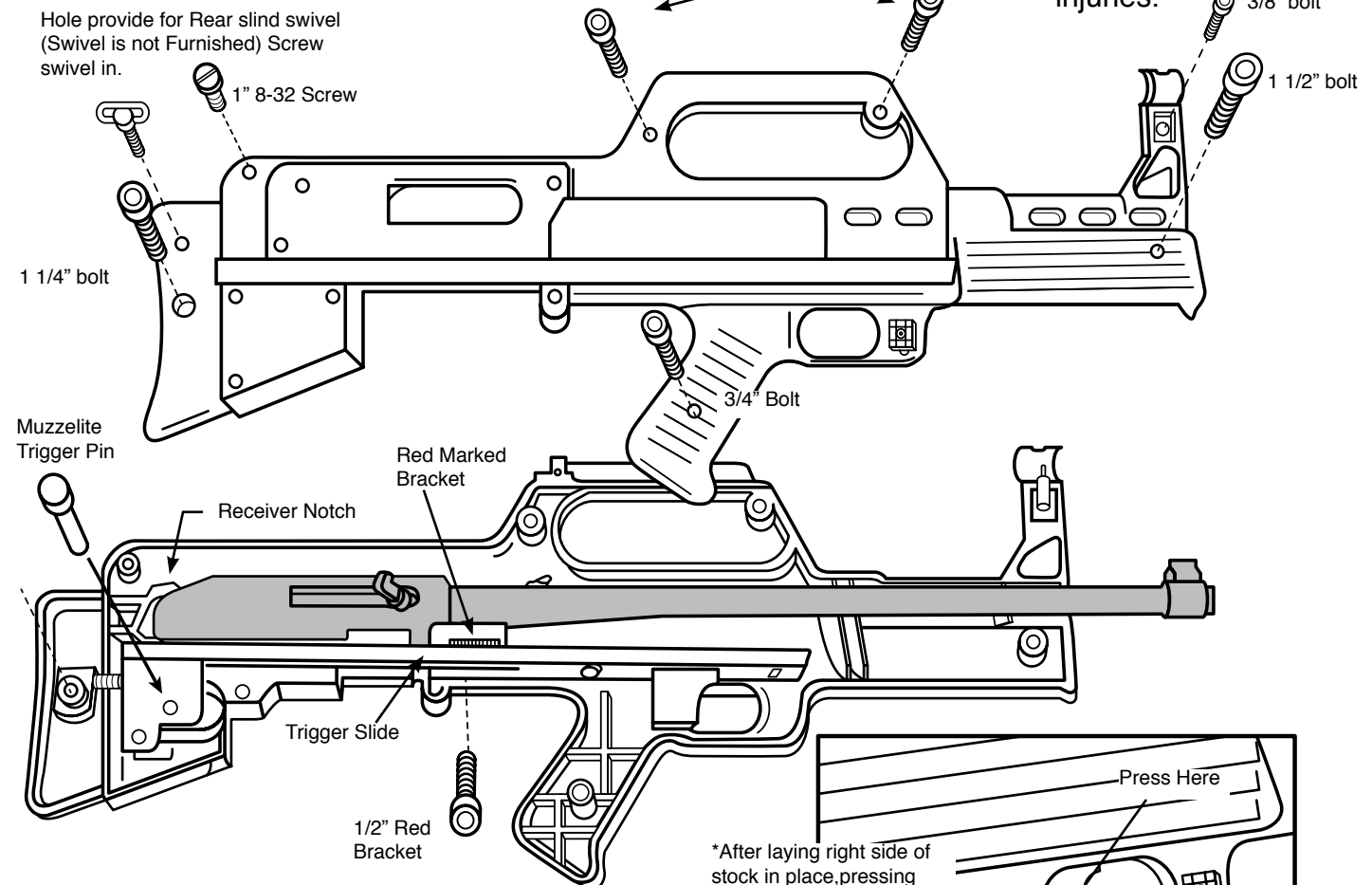
Made in the U.S.A

Assembly Instructions

MZ-1022

1. Following instructions in your Ruger owner manual, remove rifle from wood stock.

2. Lay left half of Muzzelite stock on flat surface. Lay Muzzelite trigger slide in groove. Place rifle trigger section through opening in trigger slide and lay rifle on stock.



3. Rear of receiver lays in receiver notch. Make sure Muzzelite trigger slide moves freely in groove.

4. Slide the trigger guard to align the hole in the trigger guard with the hole in the red marked bracket. The red bolt will pass through the hole in the trigger slide and attach securely to the red marked bracket to the receiver using the socket key.

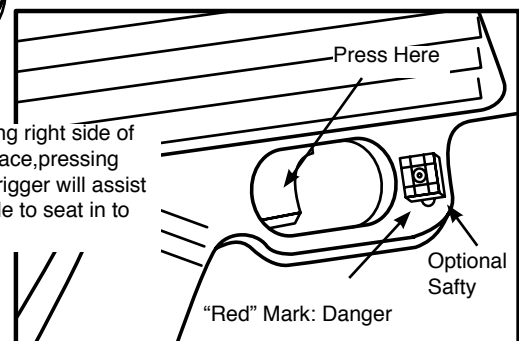
5. Insert Muzzelite trigger pin through FRONT holes in trigger slide. Pin should be in front of trigger and seated in both holes.

6 *Place right half of Muzzelite stock in place and insert 6 bolts. Be sure to place correct length bolts in correct holes. Tighten with socket key. To prevent stripping threads, **DO NOT OVER-TIGHTEN.**

Caution!

The Muzzelite stock cannot be used by left-handed shooters as the spent shells would be ejected in the face causing serious injuries.

*After laying right side of stock in place, pressing down on trigger will assist trigger slide to seat in to groove.



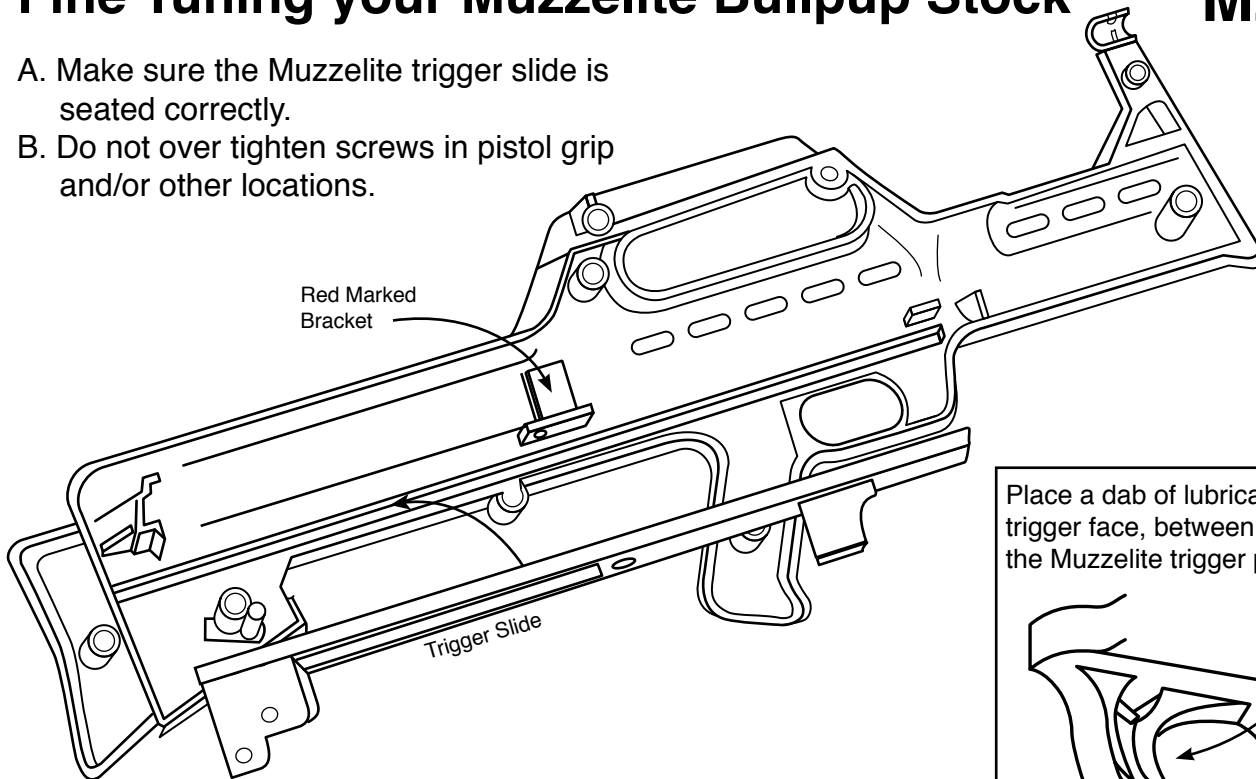
NOTE: ACCESS IS PROVIDED FOR USE OF ORIGINAL SAFETY PRACTICE WITH LEFT HAND TO OPERATE SAFETY WHILE HOLDING PISTOL GRIPS WITH RIGHT HAND



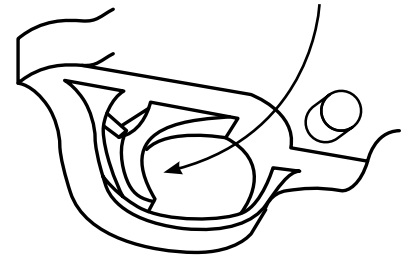
Fine Tuning your Muzzelite Bullpup Stock

MZ-1022

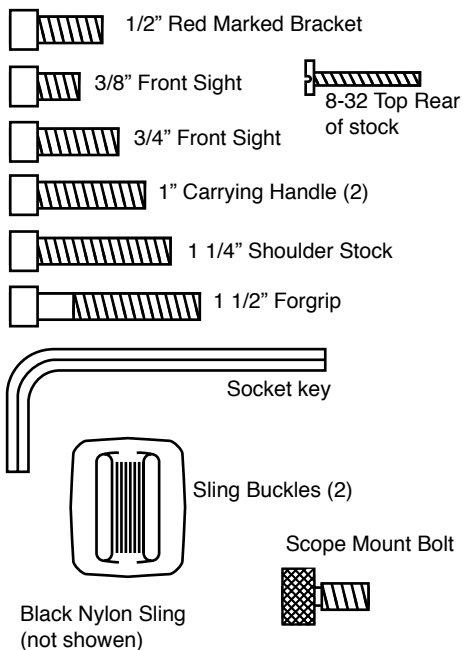
- A. Make sure the Muzzelite trigger slide is seated correctly.
- B. Do not over tighten screws in pistol grip and/or other locations.



Place a dab of lubricant of the Ruger trigger face, between the trigger and the Muzzelite trigger pin.

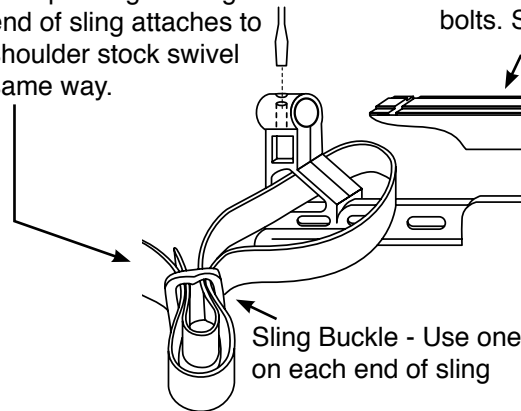


Muzzelite Parts List



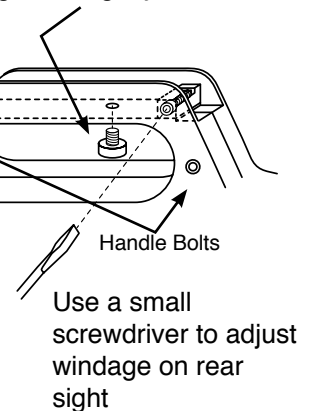
To attach assault sling:

Use a small screwdriver to adjust elevation on front post sight. Long end of sling attaches to shoulder stock swivel same way.



To attach a scope mount:

Loosen the 2 handle bolts. Slide scopes mount to rear. Screw in finger bolt from bottom. Tighten 2 handle bolts. Screw finger nut tightly.



Caution: The finish on the bolts, safty switch bolt, front and rear sight screws and rivets heads is similar to gun blueing and will rust if not kept well oiled.

To guarantee a frictionless contact between the ruger trigger and the Muzzelite trigger pin, apply a dab of solit lubricant to the face of the trigger before assembly.

Muzzelite Accessories

For more accessories go
to mountsplus.com



Modular
"MOLLE"
Straps

BACK OF POUCH
TO SIDE OF BAG



Muzzelite Rifle Case

Cushioned zippered bag with Shoulder Straps and Modular MOLLE straps to attach utility bags.

#SBI-MZ-CC



Small Utility Pouch

Modular MOLLE straps to attach on gun bag or vest. (MOLLE straps on back, not shown).

#SBI-SB-CC

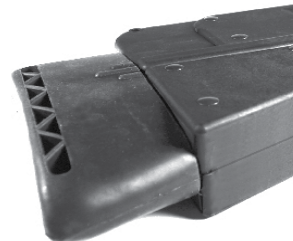
Large Utility Pouch

Modular MOLLE straps to attach on gun bag or vest with side and back mounts.

#SBI-90-CC



Optional: Muzzelite Carry Bag with Large Utility Pouch with two Small Pouches shown attached with MOLLE straps.



Muzzelite Recoil Pads

For Muzzelite stocks Adds .5" to overall length

#RPL-BLK-007



1-800-428-9394

www.mountsplus.com

MWG 50 Rounder Magazine

for the Ruger 10/22

Available at MWGCO.com

This 50 round magazine for the Ruger 10/22 is constructed of a durable polymer with steel feedlips for strength. The unique "teardrop" shape of the magazine allows a large amount of cartridges to be carried in a relatively compact package, as opposed to the more traditional curved magazines. Perfect for use with the **Muzzelite 10/22 bullpup** conversion kit, as this high capacity magazine will not interfere with the stock's pistol grip.

#MWG-022-050

